

Texart

Multi-Function Direct & Indirect Sublimation Printer

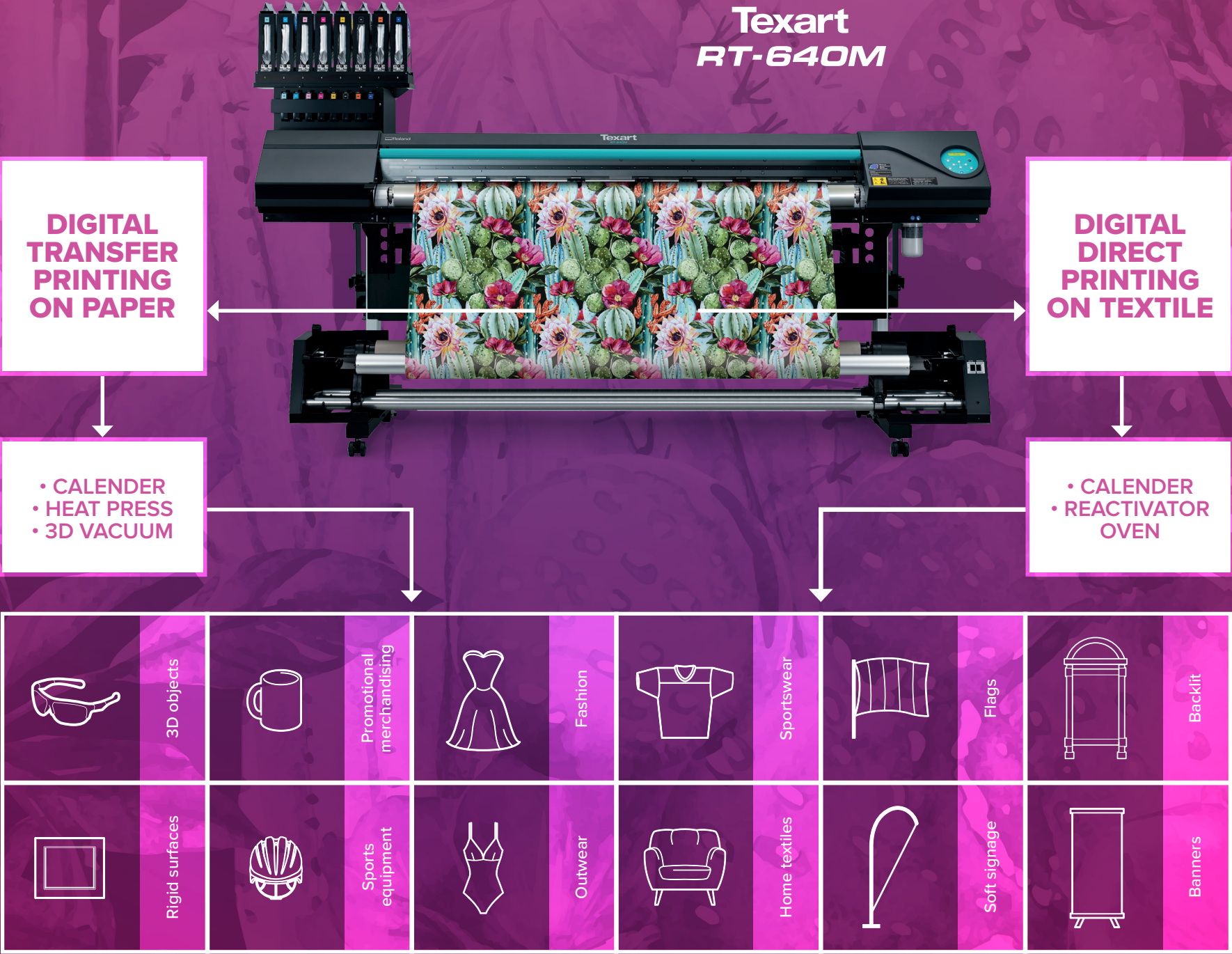
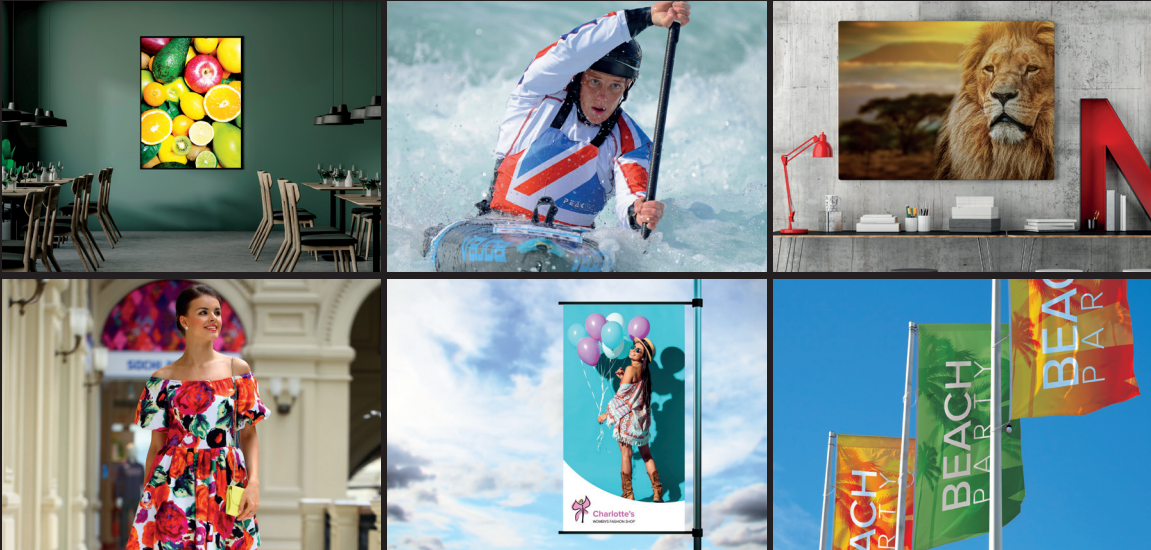
RT-640M



 **Roland**

MULTI-FUNCTION SUBLIMATION DEVICE. PRINT ONTO TRANSFER PAPER AND DIRECT-TO-TEXTILE.

The Texart RT-640M is a multi-function large format sublimation printer, cleverly designed to enable printing both directly onto transfer paper and direct-to-textile within one single affordable device. The best choice for short run, on-demand production, the RT-640M delivers maximum versatility, flexibility and outstanding print quality. Why make the choice between an indirect or direct sublimation printer, when you can buy one that does both?



Direct Printing and Digital Transfer

The unique printing capabilities of the RT-640M mean that you can print directly onto polyester-based/coated textiles, as well as dye-sublimation transfer paper, using the same ink and RIP. There's simply no other device in its class that can do this all-in-one.

Using specially formulated Texart sublimation inks, and the industry-leading Ergosoft Roland Edition 2 RIP software (included in the printer package), you simply need to add a post-printing sublimation system (such as a heat press, calender, 3D vacuum or reactivator oven), to have everything required to enter into the profitable world of textile printing.

Even tensioning and no skewing

The RT-640M is equipped with an adjustable front roller system, to ensure stable and uninterrupted production. And combined with a media take-up system delivers even tensioning, with no skewing.

With an ink collection channel within the printer bed, the RT-640M will print perfectly onto thin substrates, such as voile or flag materials. The results are detailed, precise and accurate prints – wound perfectly onto the take-up system, in preparation for heat fixation.

4 colour CMYK	8 colour CMYKcLmLyOrViFpFy
Hight Speed (540x360/2PASS) 32.6 sqm/gr	Hight Speed (540x360/4PASS) 16 sqm/gr
Production (540x360/3PASS) 22.0 sqm/gr	Production (540x360/6PASS) 10.7 sqm/gr
Standard (360x720/4PASS) 16.0 sqm/gr	Standard (360x720/8PASS) 8 sqm/gr
Hight Quality (720x720/8PASS) 8 sqm/gr	Hight Quality (720x720/12PASS) 5.4 sqm/gr

A wide range of Materials

The RT-640M device enables printing onto a huge variety of different materials and items.

Using the indirect transfer method (with paper) you can image onto polyester fabrics, mixed polyester/cotton*, LYCRA®, nylon, coated surfaces and pre-treated metals.

When printing directly, there is a wide variety of single and double-sided pre-coated polyester fabrics available; such as flag polyester, mesh, backlit, voile, block out and banners.

Vivid colours, smooth gradations and super-sharp images with Texart inks

The RT-640M uses specially formulated Roland Texart SBL3 ink in 1000cc pouches, offering fast drying times and transfer rates. As well as stunning colour vibrancy, robust washability and high quality output on a whole range of materials.

Available in 4-colour (CMYK) and 8-colour (CMYKcLmOrVi) Texart ink produces vivid colours with rich blacks and sharp detail. In 8-colour, the addition of Orange and Violet ink delivers an extremely wide colour gamut, with bright reds, intense oranges, and deep purples, while Light Cyan and Light Magenta offer subtle gradations and delicate skin tones.

Texart ink is also available in Fluorescent Pink and Yellow ink that produces hundreds of vivid fluorescent colours and soft pastel shades for fashionable sportswear, decor and eye-catching signs.

ErgoSoft Roland Edition 2

Developed to perfectly integrate with the Roland RT-640M, ErgoSoft Roland Edition 2 combines intuitive image editing and print output tools with extensive colour management and enhanced workflow features — enabling users to take on multiple print jobs with minimum waste and maximum results. ErgoSoft Roland Edition 2 features a PDF engine for faster RIP times and processing (up to 40% faster), a simplified profiling process for 8 colour ink set, the ability to create or import Colour Books (including FOGRA and Pantone®) and many other features designed to automatically optimise your colour output and streamline your workflow.



Texart *RT-640M*



Texart ink



Specifications		
Printing technology		Piezoelectric inkjet
Media	Width	259 to 1625 mm (10.2 to 64 in.)
	Thickness	Max. 1 mm (39 mil)
	Roll outer diameter	Max. 210 mm (8.3 in.)
	Roll weight	Max. 40 kg (88 lb)
	Core diameter*1	76.2 mm (3 in.) or 50.8 mm (2 in.)
Printing width*2		Max. 1615 mm (63.6 in.)
Ink	Types	Texart ink, 1000 cc pouch
	Colours	4 colours (Cyan, Magenta, Yellow, Black) 8 colours (Cyan, Magenta, Yellow, Black, Light Cyan, Light Magenta, Orange, Violet) 8 colours (Cyan, Magenta, Yellow, Black, Fluorescent Pink, Fluorescent Yellow, Orange, Violet) (Choose from CMYK+LcLmOrVi and CMYK+OrViFpFy options)
Printing resolution (dots per inch)		Max. 1440 dpi
Distance accuracy*3		Error of less than $\pm 0.3\%$ of distance travelled, or ± 0.3 mm, whichever is greater
Connectivity		Ethernet (10BASE-T/100BASE-TX, automatic switching)
Power-saving function		Automatic sleep feature
Power requirements		AC 100 to 240 V $\pm 10\%$, 1.5 A, 50/60 Hz
Power consumption	During operation	Approx. 140 W
	Sleep mode	Approx. 31 W
Acoustic noise level	During operation	62 dB (A) or less
	During standby	49 dB (A) or less
Dimensions (with stand)		2650 (W) x 795 (D) x 1600 (H) mm (104.4 x 31.3 x 63 in.)
Weight (with stand)		160 kg (353 lbs)
Environment	Power on	Temperature: 18 to 25°C (64.4 to 77°F), humidity: 35 to 65%RH (no condensation)
	Power off	Temperature: 15 to 30°C (59 to 86°F), humidity: 20 to 80%RH (no condensation)
Included items		RIP software, take-up system, exclusive stands, power cable, media clamps, media holder, User's Manual, etc.
Software		For 4 colour ink configuration a choice of either VersaWorks 6 or ErgoSoft Roland Edition 2 For 8 colour ink configuration ErgoSoft Roland Edition 2

*1 The media holder for this machine is exclusively designed for media rolls with a paper tube measuring 76.2 mm (3 in.) in diameter. To use 50.8 mm (2 in.) media rolls, the optional media flanges are required. *2 The length of the production run is subject to the limitations of the software program.
*3 • Media type: Media specified by Roland DG Corporation. • Temperature: 25°C (77°F), humidity: 50% • Roll media must be loaded correctly.
• Excluding expansion/contraction of the media • All corrections or adjustment function of this machine have been made properly. • Print travel: 1 m.

Roland reserves the right to make changes in specifications, materials or accessories without notice. Your actual output may vary. For optimum output quality, periodic maintenance to critical components may be required. Please contact your Roland dealer for details. No guarantee or warranty is implied other than expressly stated. Roland shall not be liable for any incidental or consequential damages, whether foreseeable or not, caused by defects in such products. PANTONE® is the property of Pantone LLC. All other trademarks are the property of their respective owners. Reproduction or use of copyrighted material is governed by local, national, and international laws. Customers are responsible for observing all applicable laws and are liable for any infringement. Roland DG Corporation has licensed the MMP technology from the TPL Group.

Ink		
Model		Description
Texart ink	SBL3-CY	Cyan, 1000cc
	SBL3-MG	Magenta, 1000cc
	SBL3-YE	Yellow, 1000cc
	SBL3-BK	Black, 1000cc
	SBL3-LC	Light cyan, 1000cc
	SBL3-LM	Light magenta, 1000cc
	SBL3-OR	Orange, 1000cc
	SBL3-VI	Violet, 1000cc
	SBL3-FP	Fluorescent pink, 1000cc
	SBL3-FY	Fluorescent yellow, 1000cc

VersaWorks 6 System Requirements	
Operating System	Windows® 10 (32/64-bit) Windows® 8/8.1 (32/64-bit) Windows® 7 Ultimate/Professional (32/64-bit)
CPU	Intel® Core™ 2Duo, 2.0 GHz or faster recommended
RAM	2 GB or more recommended
Video card and monitor	A resolution of 1280 x 1024 or more recommended
Free hard-disk space	40 GB or more recommended
Optical drive	DVD-ROM
Other	Internet connection recommended

ErgoSoft Roland Edition 2	
Operating System	Windows® 10 (32/64-bit) Windows® 8/8.1 (32/64-bit) Windows® 7 Professional (32/64-bit) Windows® 7 Home (32/64-bit)
CPU	Intel® Core™ i3; 3 GHz or faster recommended
RAM	8 GB or more recommended
Video card and monitor	Screen resolution of 1600 x 900 or higher recommended
Free hard-disk space	100 GB or more recommended